

BIOGRAPHY

GIOVANNI BARBIERI BEGAN WORKING AT THE AGE OF 14 AS GO-GETTER ON BUILDING SITES; AT 16 HE WAS CAPABLE OF INDEPENDENTLY MANAGING TO COMPLETE FLOORINGS WITHIN HIS OLDER BROTHER'S BUSINESS.

AT AGE 18 GIOVANNI CONTRIBUTED 50% OF THE BUSINESS AS HIS BROTHER'S PARTNER, ESTABLISHING F.LLI BARBIERI IN 1984 WHEN THE COMPANY HAD ALREADY BEGUN PRODUCING TUMBLED MARBLE FOR ITS OWN REALIZATIONS.

SUBSEQUENTLY, AT THE AGE OF 22, HE BEGAN ATTENDING EVENING CLASSES FOR INTERIOR DESIGN, SUCCESSFULLY COMPLETING 2 THREE YEAR COURSES BETWEEN 1989 AND 1997 WHERE THE BEST RESULTS WERE ACHIEVED IN THE BUILDING SITE/PROJECTS IN COLLABORATION WITH THE ARCHITECTS THAT TAUGHT THE SAME CLASSES.

THESE COLLABORATIONS INITIATED A PERIOD OF STRONG DEVELOPMENT IN WHICH GIOVANNI WAS THE SOLE DEVELOPER/IN CHARGE OF THE PROJECTS, SUPPLYING THE MARBLE PRODUCTS EXCLUSIVELY FROM THE FAMILY BUSINESS AND PERSONALLY SUPERVISING THE INSTALLATIONS. LATER, FOCUSING ON THE PRODUCTION PROCESS OF NEW PRODUCTS, INITIALLY FOR THE LOCAL MARKET THEN EXPANDING ALL THE WAY TO THE UNITED STATES. THANKS MAINLY TO THE FORMIDABLE DESIGN UNDERSTANDING IN RESEARCH, DEVELOPMENT AND MARKETING WITH AMERICAN DISTRIBUTORS

MANY PATENTS, BOTH DECORATIVE AND PERTAINING TO INDUSTRIAL PROCEDURES HAVE BEEN DEVELOPED TOWARDS THE END OF THE '90S. WITHOUT DOUBT, THE MOST IMPORTANT HAS BEEN THE DEVELOPMENT OF THE FINISH CALLED "MARMO ANTICO LUCIDO" AND THE "FRAMENTI BORDERS COLLECTION", "TIMEWORN MARBLE" AND THE "SERIE STORICA".

THE TRADE SHOW BOOTHS EXPLICITLY DESIGNED AND BUILT BETWEEN 1999 AND 2002 WERE PROMPTLY SOLD TO NEW SHOWROOMS AND DESIGNED INCREASINGLY SUPERIOR EACH TIME.

HAVING CREATED SOME EXCLUSIVE DECORATIVE PANELS ALONG WITH ROBERTO LANARO, GIOVANNI HAS PARTICIPATED IN SOME CONTEMPORARY ART COMPETITIONS RECEIVING A SPECIAL MENTION AT TORINO IN 2003.

ON 2008, HIS CREATIONS OF NEW PRODUCTS AND COLLECTIONS ARE WELL RECEIVED, NOT ONLY ON THE AMERICAN MARKET: "AMBRA COLLECTION" SURELY IS ONE OF THE BEST NEWS IN THIS YEAR: A COLLECTION THAT HAS RECEIVED ONE OF THE AWARDS OF THE MONTHLY AMERICAN ARCHITECTURE "ARCHITECTURAL RECORD" WHICH DESIGNATED "AMBRA COLLECTIONS" AMONG THE BEST CONSTRUCTION PRODUCTS. IT WAS EXPOSED AT "TRIENNALE DESIGN MUSEUM" IN MILAN FOR MORE THAN ONE YEAR.

IN 2010 HE STARTED HIS SUCCESSFUL COLLABORATION WITH SARA BALDWIN (NEW RAVENNA) DEVELOPING TIMEWORN MOSAICS, ENGINEERED MARBLE THREE-DIMENSIONAL TILES, HAND-MADE TUSCANY TERRACOTTA & MURANO GLASS, SINCE THEN GIOVANNI BARBIERI IS COLLABORATING WITH NEW DISTRIBUTORS, EXPANDING FURTHER INTO MARKETS SUCH AS CANADA, RUSSIA, BANGKOK, SINGAPORE AND HONG KONG.

GIOVANNI BARBIERI HAS BEEN A SOURCE OF INSPIRATION FOR MANY RENOWN BRANDS AND COMPETITORS RESULTING IN THE SUCCESSFUL REPRODUCTION OF HIS INVENTIONS AND TECHNIQUES.

RECOGNITION

FEATURED PRODUCT
MADISON COLLECTION
ELLE DECOR ARCHI GUIDE 2012-2013

BEST OF THE YEAR PRODUCT AWARDS FINALIST 2012
SOPHIE IN TERRACOTTA AND MURANO GLASS
INTERIOR DESIGN MAGAZINE USA

BEST OF THE YEAR PRODUCT AWARDS FINALIST 2011
TIMEWORN MARBLE MOSAICS
INTERIOR DESIGN MAGAZINE USA

BEST CONSTRUCTION PRODUCTS OF 2008
AMBRA CARVED STONE
ARCHITECTURAL RECORD MAGAZINE USA

MATERIAL EXCELLENCE CERTIFICATE 2008
CHOCOLATE STONE BORDERS
MATERIAL CONNEXION,
NEW YORK, MILAN, SHANGHAI, BEIJING, DAEGU, BANGKOK, COLOGNE, ISTANBUL, SEOUL,
SKÖVDE.

SPECIAL MENTION
INTERNATIONAL CONTEMPORARY ART COMPETITION TURIN 2003
MARBLE AND METAL EXCLUSIVE DECORATIVE PANELS

REFERENCES

ARTISTIC TILE INC. USA (DESIGNER),

FLLI BARBIERI ITA (MANUFACTURER /DESIGNER/ OWNER PARTNER),

HISTORICAL FLOOR/B.D.S.R. ITA-USA (DESIGNER),

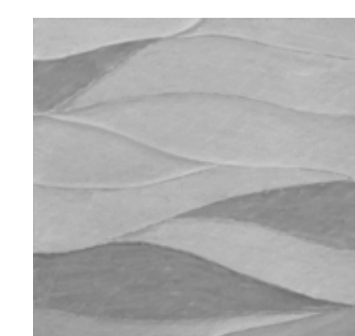
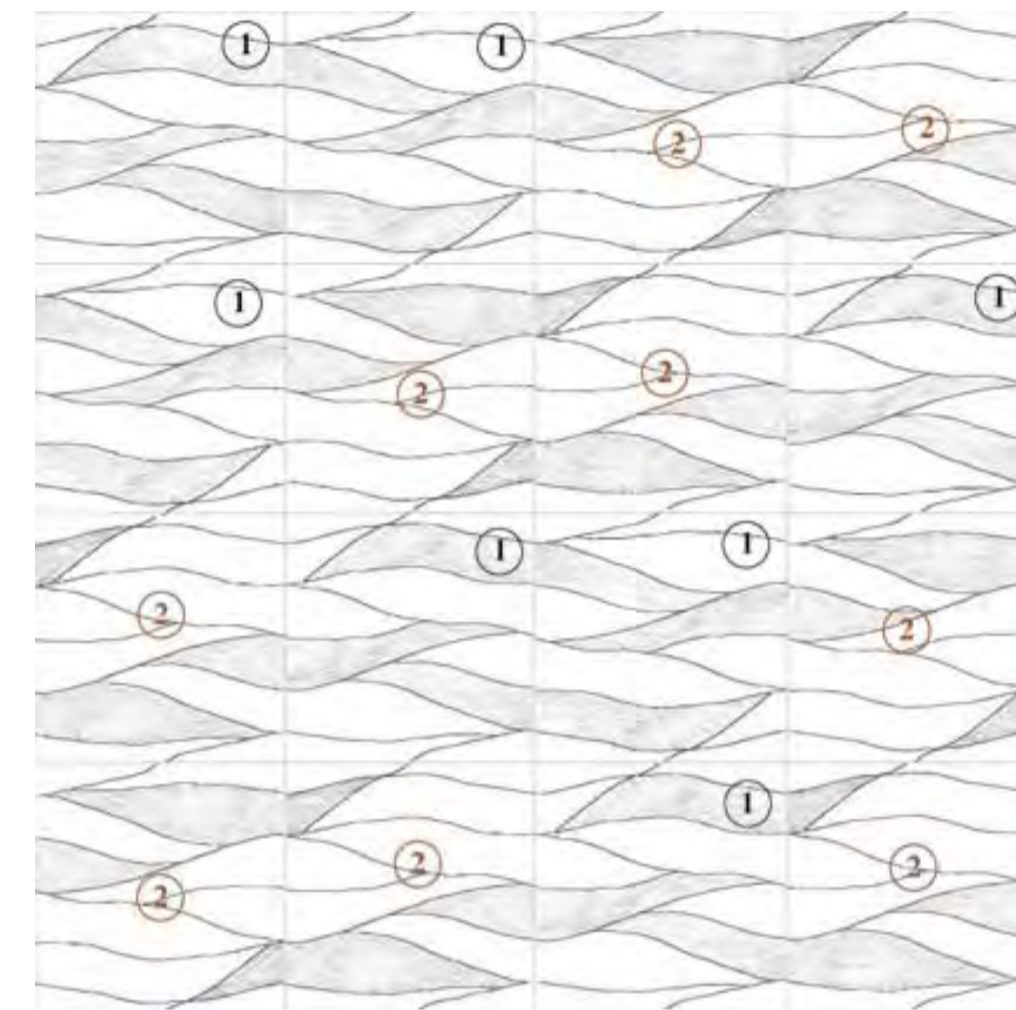
NEW RAVENNA INC USA (DESIGNER AND SUPPLIER),

INTERLAM INC USA (DESIGNER),

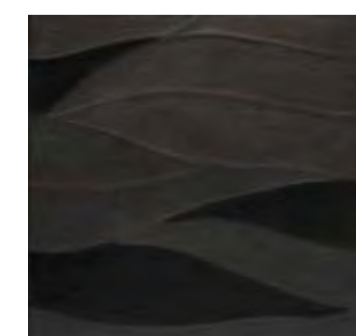
HANDCARVED NATURAL STONE TILES



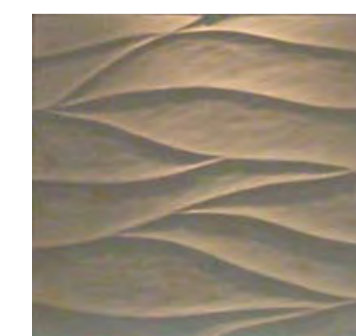
AMBRA
JANUARY 2008
60X60X1,8 CM
NATURAL STONE
2008 AWARD WINNING



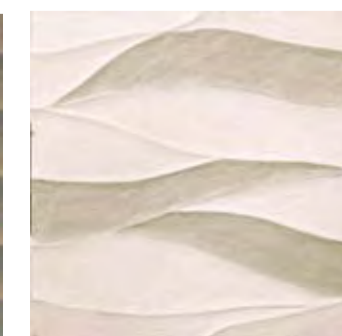
LIGHT GREY



BLACK



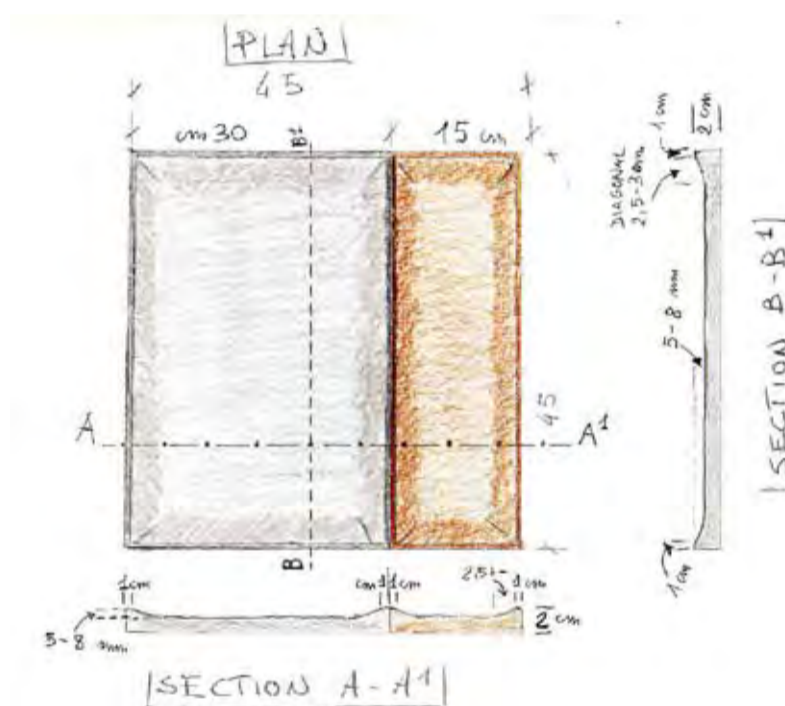
BEIGE



SWELL BROWN

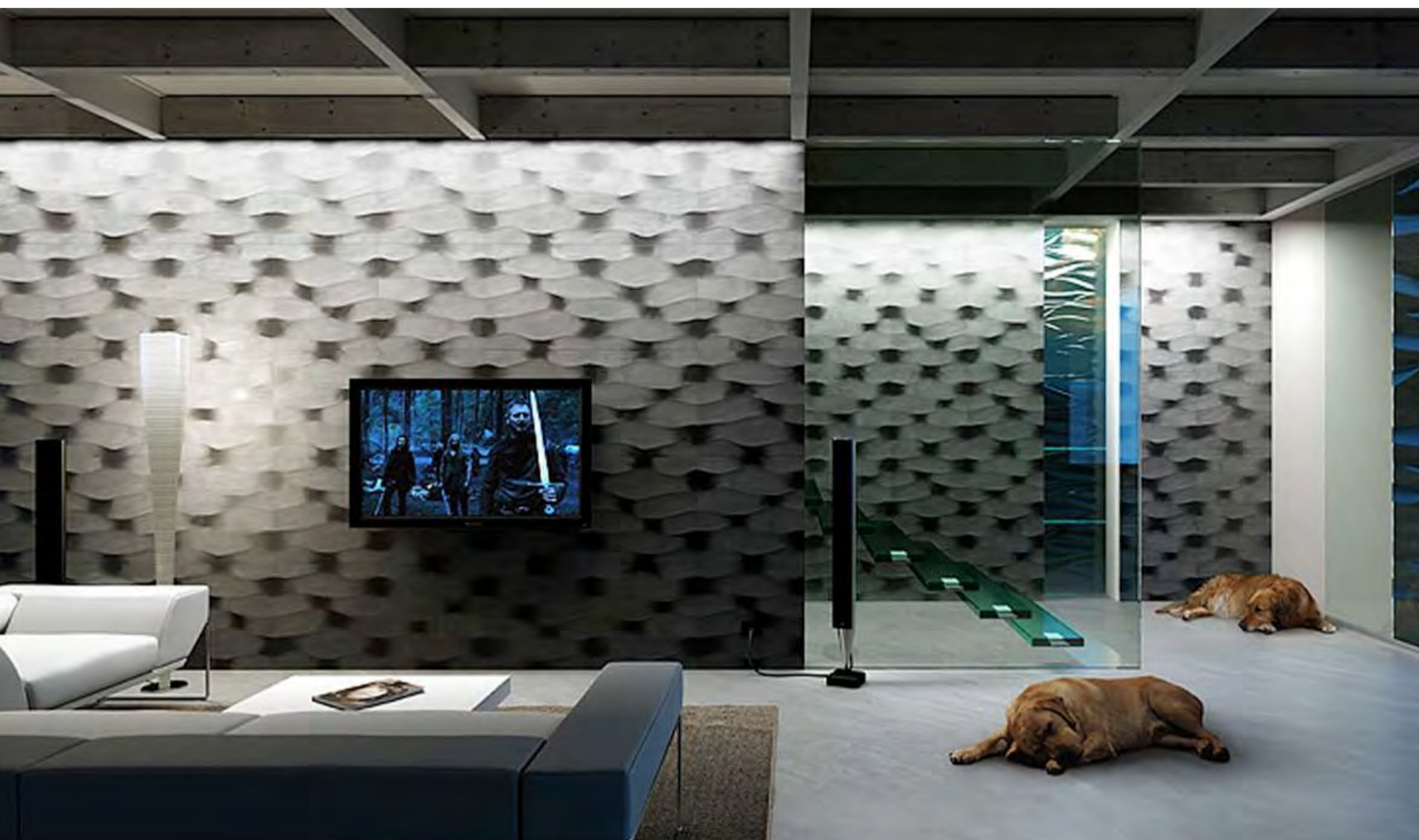
MADISON
MAY 2009

45x45x2 CM
NATURAL STONE



WINDFEEL
MAY 2009

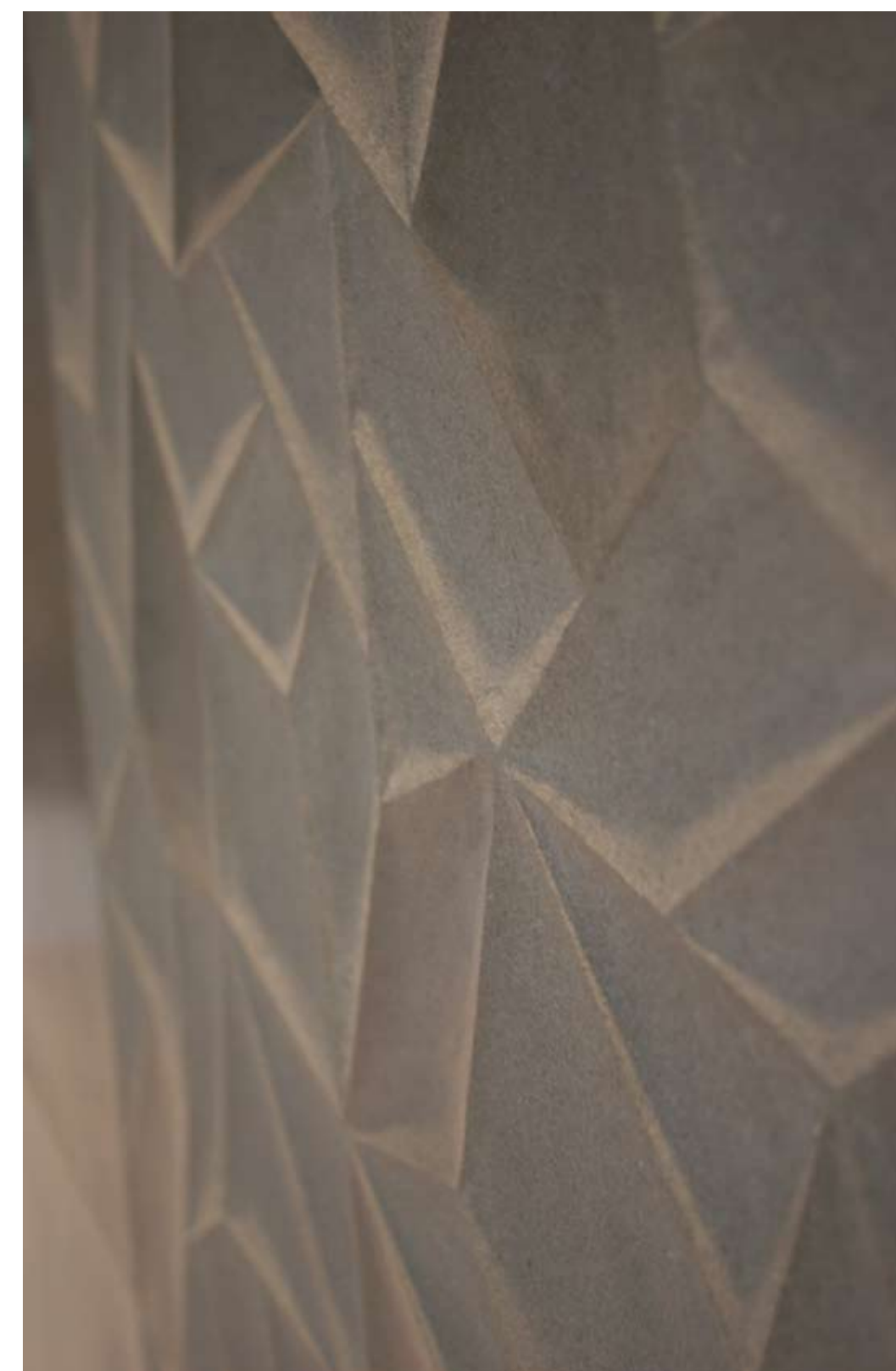
60x60x1,8 CM
BLACK LIMESTONE



© COPYRIGHT BY GIOVANNI BARBIERI 1997-2013

PRISMA
MAY 2009

60X60X2 CM
LIGHT GREY SANDSTONE



AMUR

OCTOBER 2009

4 SIZES PATTERN : CM 20x20 / 20x40 / 40x40 / 40x60
LIGHT GREY SANDSTONE THICKNESS CM 2



OBLÌO
MAY 2010

60x60x2 CM
BLACK LIMESTONE

VENICE LEAVES
2009

CUSTOM MADE WATERJET CUT
LIGHT GREY SANDSTONE



LEAVES
2009

40x40x1,5 CM
LIGHT GREY SANDSTONE



© COPYRIGHT BY GIOVANNI BARBIERI 1997-2013

CLAS
SEPTEMBER 2012

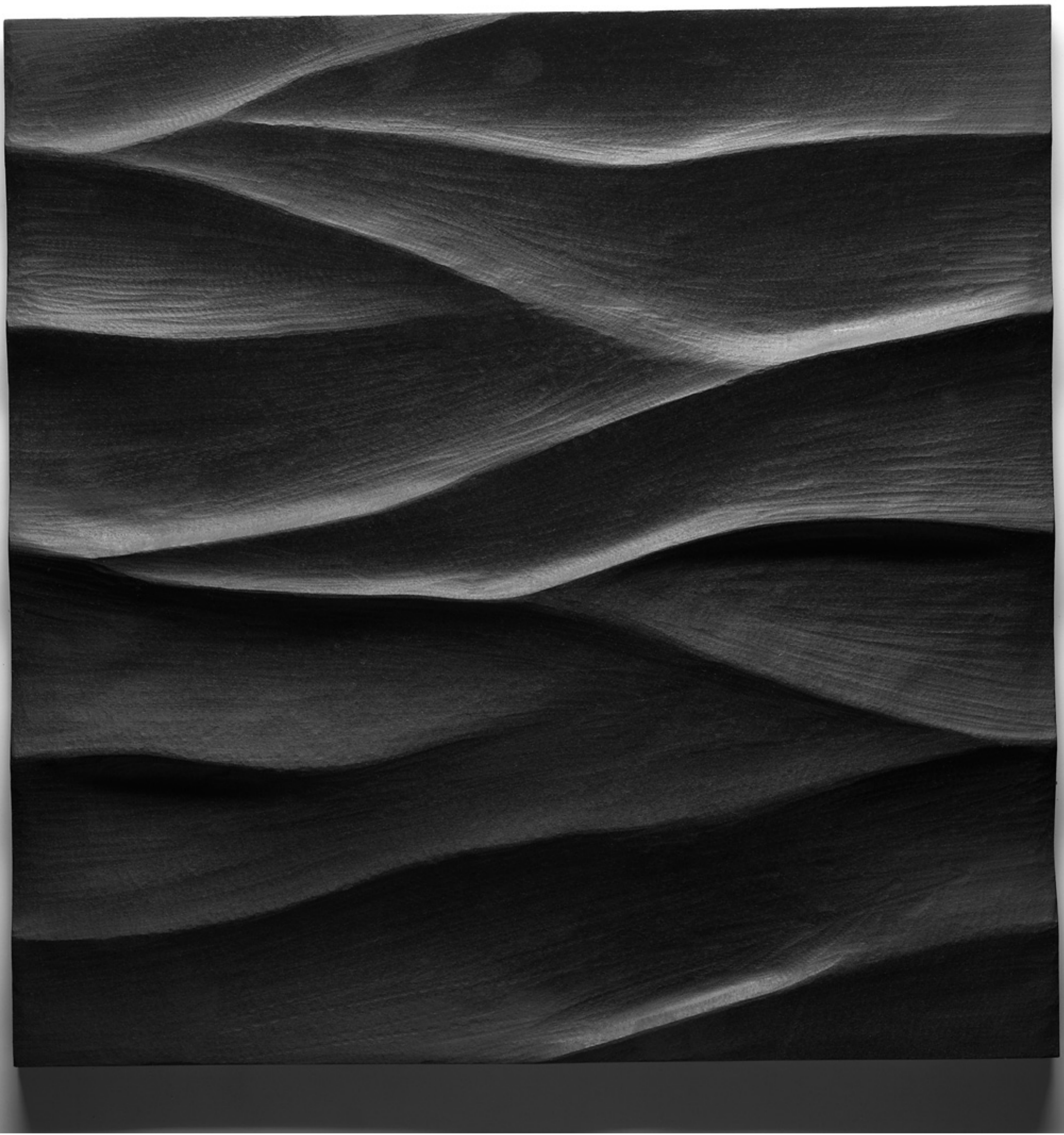
40x60x2 CM
ANY NATURAL STONE/ PROJECT
CUSTOM MADE



© COPYRIGHT BY GIOVANNI BARBIERI 1997-2013

ENGINEERED MARBLE CARVED TILES

THE ENGINEERED MARBLE CARVED TILES ARE PRODUCED, THROUGH A LABORATORY TESTED PROCESS, BY RECYCLING MARBLE DUST FROM THE PRODUCTION WASTE REFUSE THUS FAITHFULLY REPRODUCING THE TRAVERTINE AND NATURAL STONE . SUITABLE FOR ANY INSTALLATION/CLIMATE CONDITION EVEN WHERE NATURAL STONE IS NOT SUGGESTED. NO MAINTENANCE. NOT ABSORBENT. LABORATORY TESTED UNALTERABLE COLOUR FROM UV RADIANT.



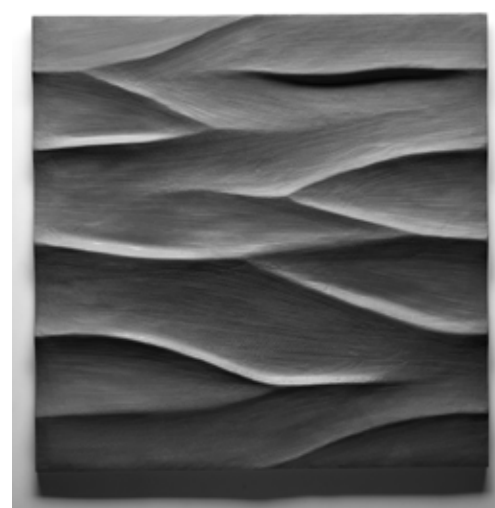
DARK GREY



BROWN



WHITE



LIGHT GREY



JASMINE

BOREAL
APRIL 2012

60X60X2 CM
ENGINEERED MARBLE





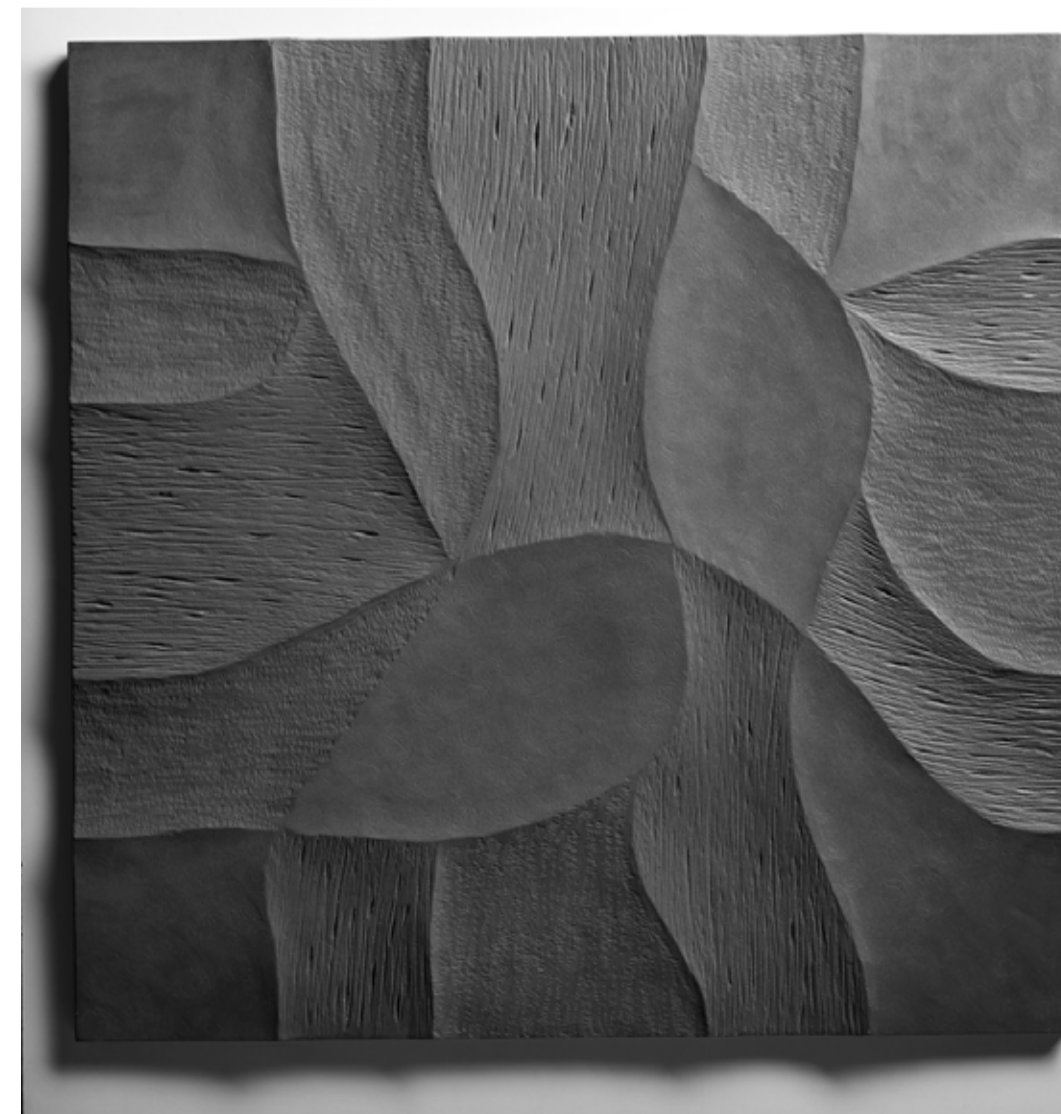
BROWN



JASMINE



DARK GREY



LIGHT GREY



WHITE

SHADES
APRIL 2011

60x60x2 CM
ENGINEERED
MARBLE

© COPYRIGHT
BY GIOVANNI
BARBIERI 2012



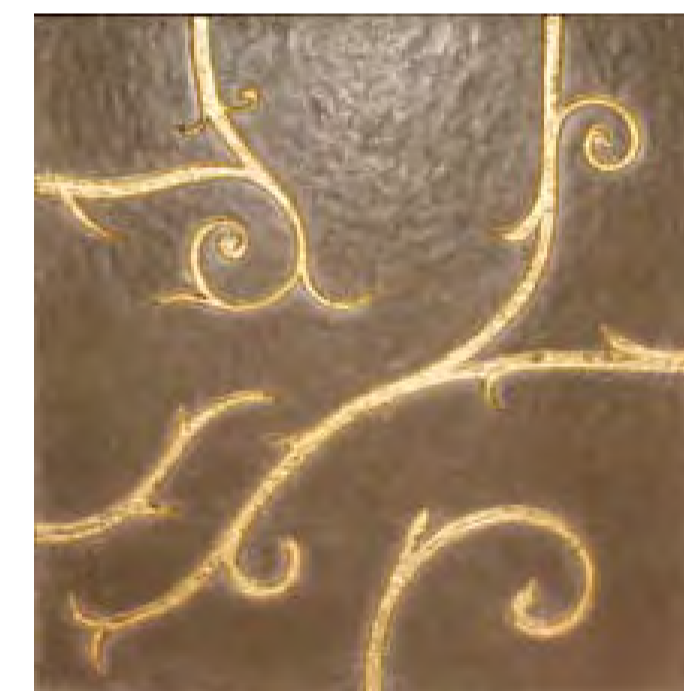
FLAMBOYANT

MAY 2011

60x60x2 CM
ENGINEERED MARBLE

LIGHT GREY WITH SILVER LEAF
& SWAROVSKI INLAY.

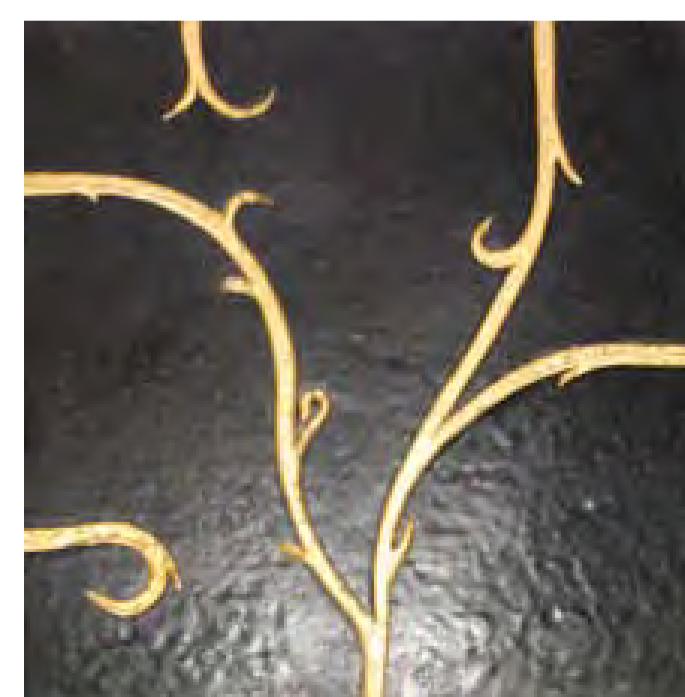
BROWN & GOLD LEAF



WHITE & GOLD LEAF
SWAROVSKI INLAY



WHITE & SILVER LEAF
BLACK SWAROVSKI



DARK GREY & GOLD LEAF

EXCITON
SEPTEMBER 2012

EXAGON SIDE 13 AND 8 CM
ENGINEERED MARBLE



REGULAR INSTALLATION "XL" SIZE 13 CM SIDE

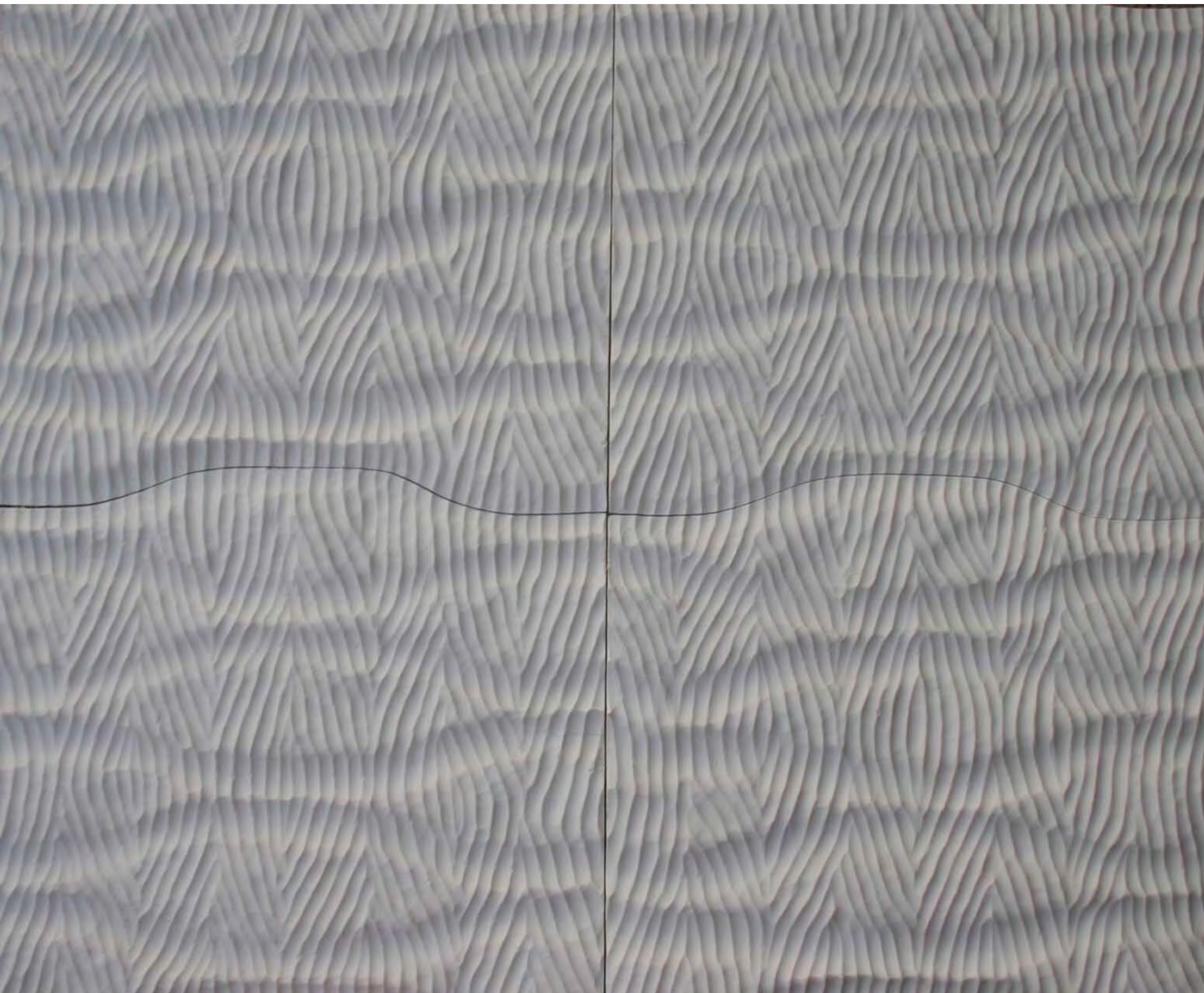
RANDOM INSTALLATION "S" SIZE 8 CM SIDE



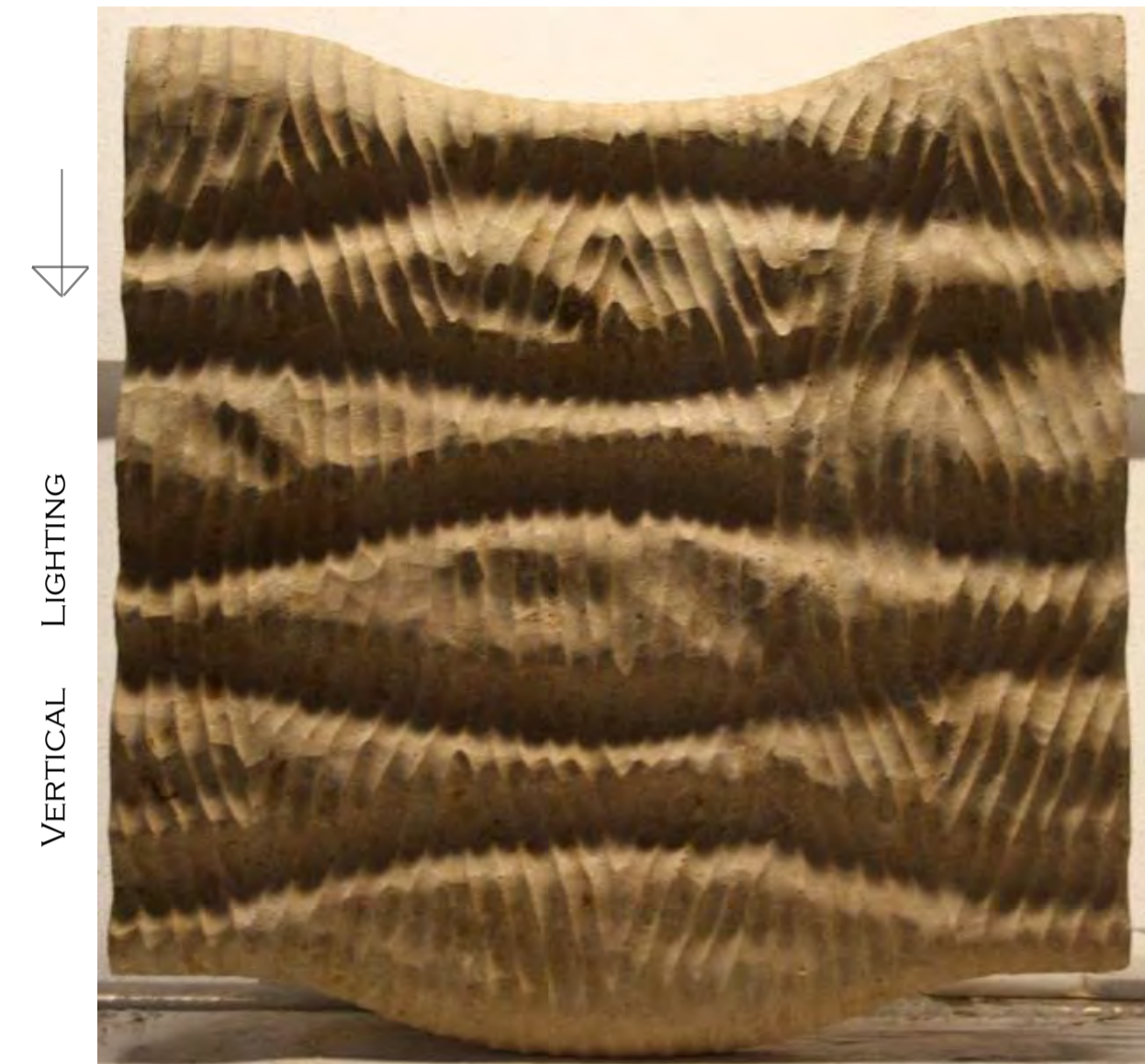
© COPYRIGHT BY GIOVANNI BARBIERI 2012

REGULAR INSTALLATION

RINEMI
MAY 2011
56x60x2 CM
ENGINEERED MARBLE



NATURAL LIGHTING



VERTICAL LIGHTING

THE SAME TILE WITH DIFFERENT LIGHTING DIRECTION



HORIZONTAL LIGHTING

HANDMADE STAINLESS STEEL

IN COLLABORATION WITH ROBERTO LANARO, A EUROPEAN RENOWN METAL ARTIST COMING FROM 3RD GENERATION FAMILY OF METAL ARTISANS.



ROBERTO LANARO 3
MAY 2012

60x60x0,5 CM
HANDMADE STAINLESS STEEL



THE BARBIERI SURFACE

THE BARBIERI NATURAL WAVY ANTIQUED MARBLE:

TILES

SINCE 1997, WHEN INVENTED,
THE BARBIERI SURFACE MARBLE TILES FINISHING IS STILL THE MOST UNIQUE IN THE WORLD.
THE TECHNOLOGY AND INNOVATION IS CONTINUOUSLY IN PROGRESS
FOR MARBLE, TERRACOTTA AND GLASS MOSAICS.



BIANCO ANTICO
100 x 100 x 3 CM



CALACATA MINI VERSAILLES PATTERN ON NET
5x5 / 5x10 / 10x10 / 10x15 x 1 CM

ANTIQUED
POLISHED
JANUARY 1997

NATURAL STONE

HISTORICAL FLOOR
MAY 2007

WAVY ANTIQUED TILES
GREY AND BEIGE LIMESTONE
40x60/40x40/40x20/20x20x1,5 cm



VARIEGATED BEIGE

HOMOGENOUS GREY



© COPYRIGHT BY GIOVANNI BARBIERI 2007

HOMOGENOUS GREY

ANTIQUED POLISHED
JANUARY 1997

NATURAL STONE TILES
DARK GREY LIMESTONE
27,5x27,5 / 27,5x55 / 55x55 / 55x82,5 x 2 CM





TIMEWORN
JANUARY 2002

BIANCO ANTICO MARBLE
PATTERN CM 30X30 / 15X30 / 15X15
X 1 CM THICK.



TIMEWORN BLUETTE MARBLE
APRIL 2012

5 - 9 - 15 CM X FREE LENGTHS
THICKNESS 1,2 - 1,5 CM
NATURAL STONE TILES

THE BARBIERI SURFACE

THE BARBIERI NATURAL WAVY ANTIQUED MARBLE :

MOSAICS

SINCE 1997, WHEN INVENTED,
THE BARBIERI SURFACE MARBLE TILES FINISHING IS STILL THE MOST UNIQUE IN THE WORLD.
THE TECHNOLOGY AND INNOVATION IS CONTINUOUSLY IN PROGRESS
FOR MARBLE, TERRACOTTA AND GLASS MOSAICS.

TIMEWORN MOSAICS

JANUARY 2011

5X5X1 CM ON NET
NATURAL STONE SHEET
ABSOLUTE BLACK MARBLE

TIMEWORN MOSAICS
JANUARY 2011

5x10x1 cm
BIANCO ANTICO MARBLE



TIMEWORN MOSAICS
JANUARY 2011

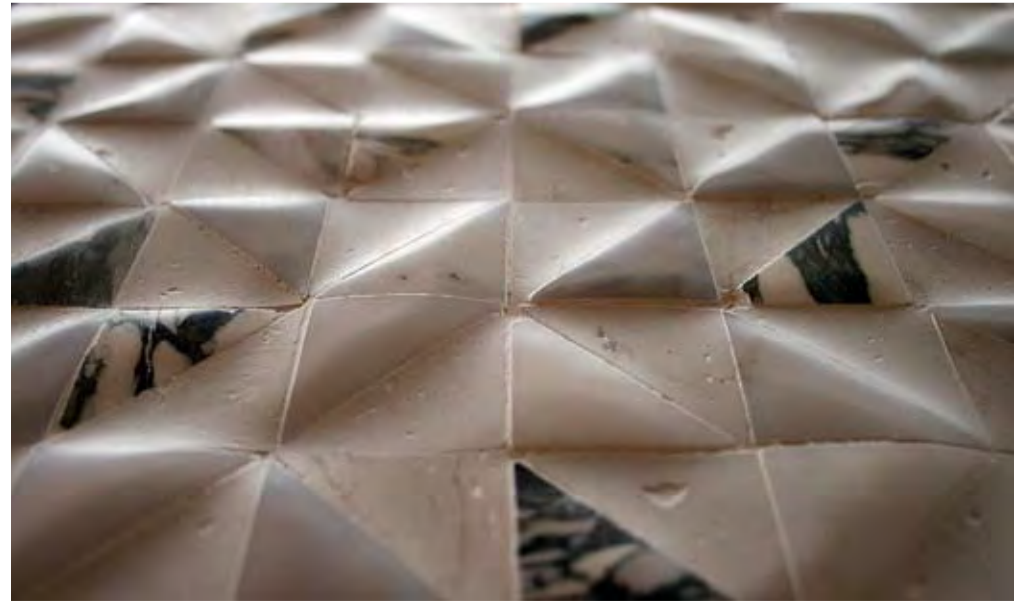
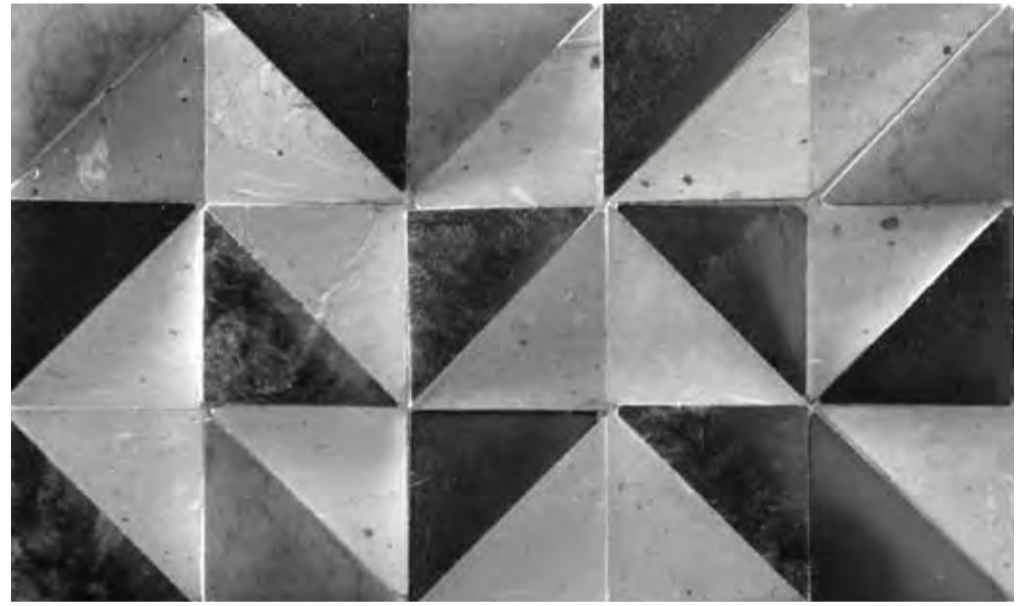
5x5x1 cm
CALACATA MARBLE





RURALE
TRIANGLES
MOSAICS
AUGUST 2009

3,8x3,8x1 CM
HANDMADE
TERRACOTTA
&
MARBLE



THE BARBIERI SURFACE

THE BARBIERI NATURAL WAVY ANTIQUED MARBLE:

WATERJET CUT PATTERNS

IN COLLABORATION WITH SARA BALDWIN
AND
NEW RAVENNA MOSAICS, VIRGINIA, USA

SINCE 1997, WHEN INVENTED,
THE BARBIERI SURFACE MARBLE TILES FINISHING IS STILL THE MOST UNIQUE IN THE WORLD.
THE TECHNOLOGY AND INNOVATION IS CONTINUOUSLY IN PROGRESS
FOR MARBLE, TERRACOTTA AND GLASS MOSAICS.



“SEINE” BY SARA BALDWIN

JANUARY 2012

CUSTOM MADE WATERJET CUT
BEIGE HANDMADE TUSCANY TERRACOTTA
& BIANCO ANTICO MARBLE.

© COPYRIGHT BY
SARA BALDWIN & GIOVANNI BARBIERI 2013



“OASIS” BY SARA BALDWIN

JANUARY 2012


CUSTOM MADE WATERJET CUT
BEIGE HANDMADE TUSCANY TERRACOTTA
& DIFFERENT LIGHT MARBLE.

© COPYRIGHT BY
SARA BALDWIN & GIOVANNI BARBIERI 2013



“SOPHIE” BY SARA BALDWIN
JANUARY 2012

CUSTOM MADE WATERJET CUT
BEIGE HANDMADE TUSCANY TERRACOTTA
& BEIGE MURANO GLASS.



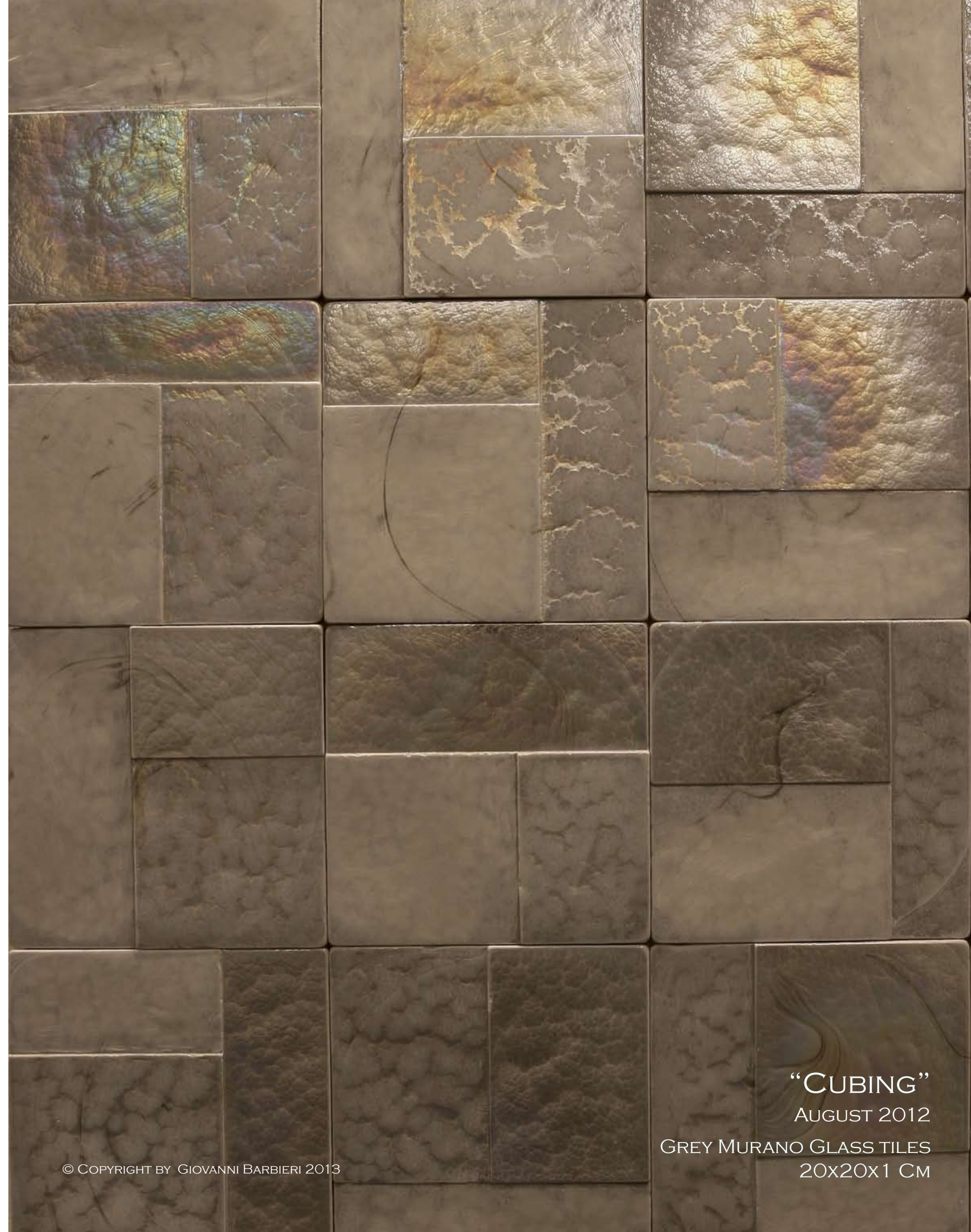
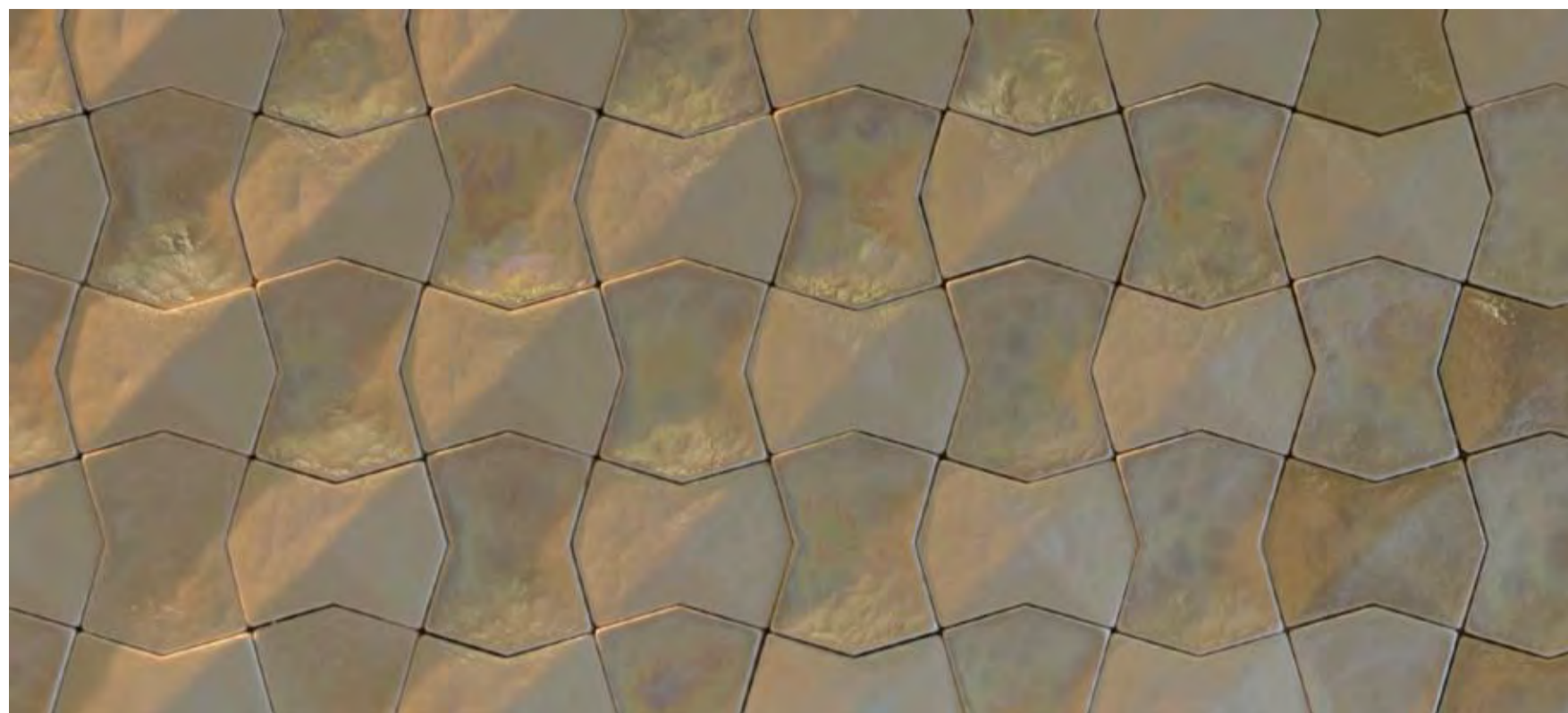
“SOPHIE” BY SARA BALDWIN
JANUARY 2012

CUSTOM MADE WATERJET CUT
GREY HANDMADE TUSCANY TERRACOTTA
& RED MURANO GLASS.

VENETIAN ARTISAN GLASS

MURANO GLASS TILES

MADE ONE PIECE A TIME
HANDMADE OR IRIDESCENT SURFACE/TEXTURES.



"SQUARE FLOW"
AUGUST 2012

WHITE MURANO GLASS CARVED/CONVEX TILES

© COPYRIGHT BY GIOVANNI BARBIERI 2013

"CUBING"
AUGUST 2012

GREY MURANO GLASS TILES
20X20X1 CM

© COPYRIGHT BY GIOVANNI BARBIERI 2013

“LET’S NOT PRETEND THAT THINGS WILL CHANGE IF WE KEEP DOING THE SAME THINGS.

A CRISIS CAN BE A REAL BLESSING TO ANY PERSON, TO ANY NATION.

FOR ALL CRISES BRING PROGRESS.

CREATIVITY IS BORN FROM ANGUISH, JUST LIKE THE DAY IS BORN FROM THE DARK NIGHT.

IT’S IN CRISIS THAT INVENTIVENESS IS BORN, AS WELL AS DISCOVERIES MADE AND BIG STRATEGIES.

HE WHO OVERCOMES CRISIS, OVERCOMES HIMSELF, WITHOUT GETTING OVERCOME.

HE WHO BLAMES HIS FAILURE TO A CRISIS NEGLECTS HIS OWN TALENT AND IS MORE INTERESTED IN PROBLEMS THAN IN SOLUTIONS.

INCOMPETENCE IS THE TRUE CRISIS.

THE GREATEST INCONVENIENCE OF PEOPLE AND NATIONS IS THE LAZINESS WITH WHICH THEY ATTEMPT TO FIND THE SOLUTIONS TO THEIR PROBLEMS.

THERE’S NO CHALLENGE WITHOUT A CRISIS. WITHOUT CHALLENGES, LIFE BECOMES A ROUTINE, A SLOW AGONY.

THERE’S NO MERIT WITHOUT CRISIS. IT’S IN THE CRISIS WHERE WE CAN SHOW THE VERY BEST IN US.

WITHOUT A CRISIS, ANY WIND BECOMES A TENDER TOUCH.

TO SPEAK ABOUT A CRISIS IS TO PROMOTE IT. NOT TO SPEAK ABOUT IT IS TO EXALT CONFORMISM.

LET US WORK HARD INSTEAD. LET US STOP, ONCE AND FOR ALL, THE MENACING CRISIS THAT REPRESENTS THE TRAGEDY OF NOT BEING WILLING TO OVERCOME IT.”

ALBERT EINSTEIN, 1955

A handwritten signature in black ink, appearing to read "Albert Einstein", with a long horizontal stroke extending to the right.